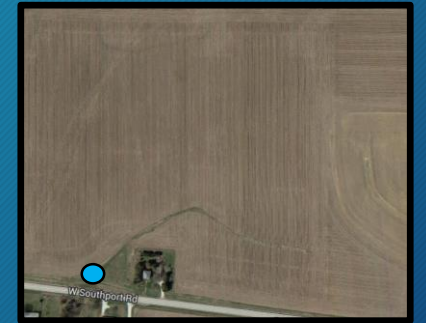


Demonstration Farms Partnership

Trivoli Site

- Monitoring site
- Grab sampling
- Soil sampling
- Boundary of drainage area



Demonstration Farms Partnership



Trivoli Site



Demonstration Farms Partnership

Trivoli Site



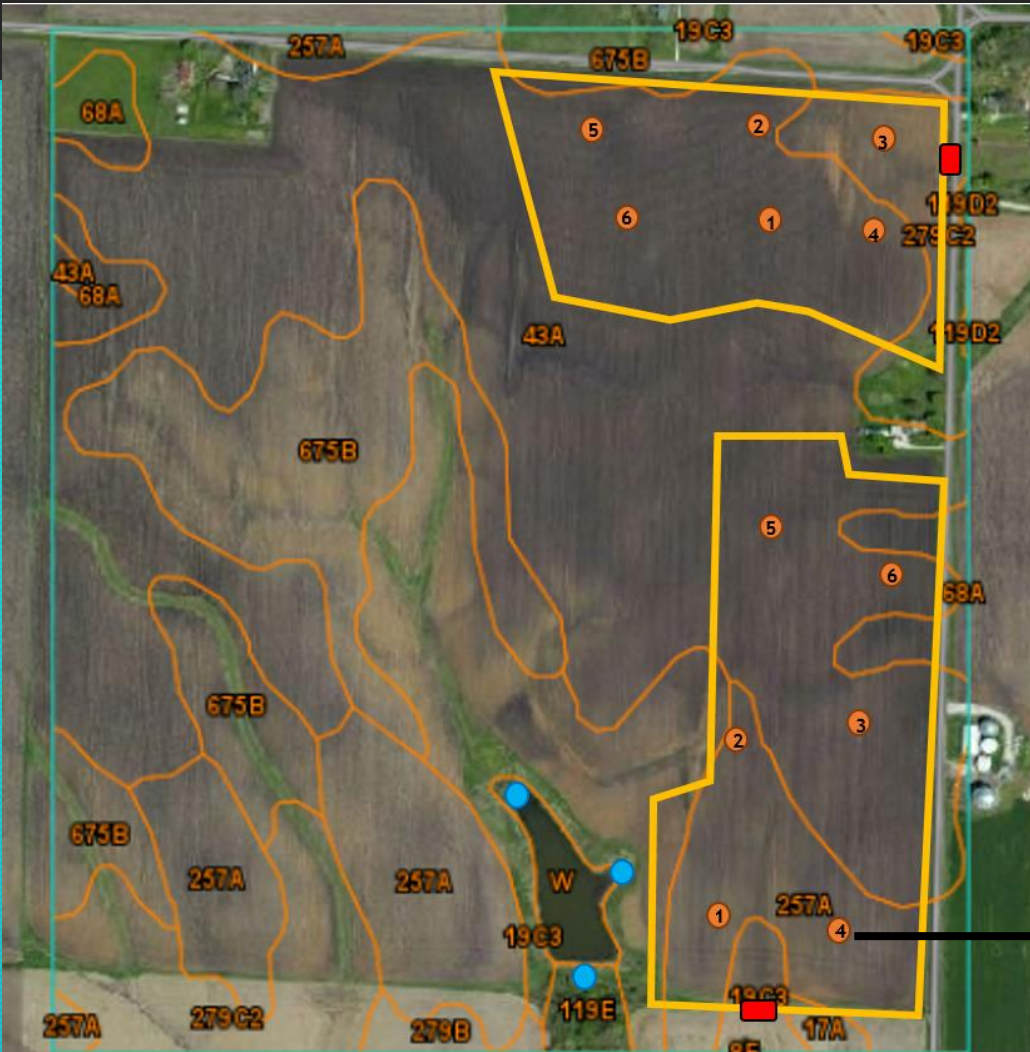
Agridrain with pressure transducer (flow) and sampling tube



Data logger and Autosampler

Demonstration Farms Partnership

Trivoli Site



Soil sampling



Nearby sites - flow meter



Demonstration Farms Partnership

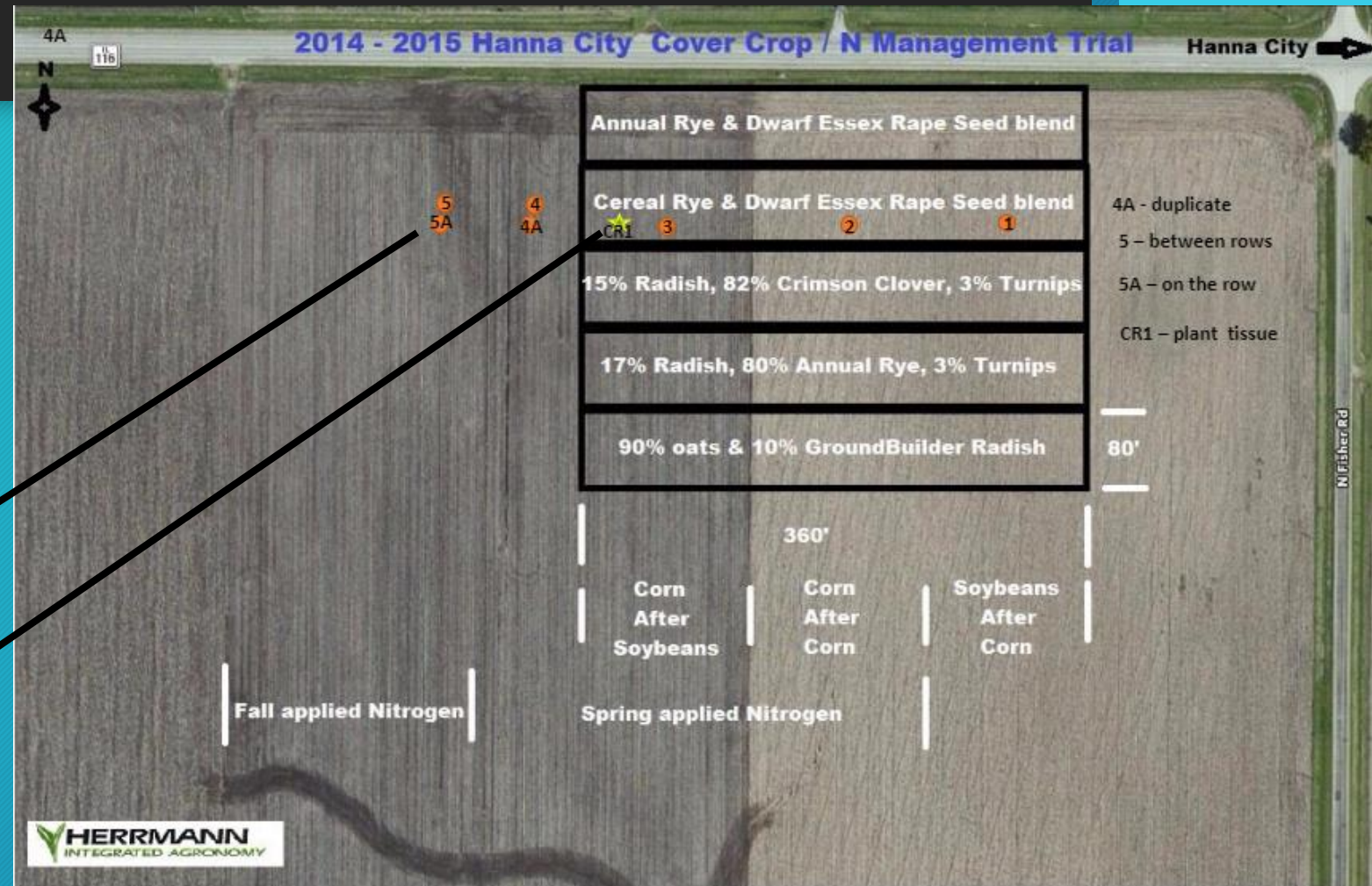
Trivoli Site - nearby site

Cover Crop / N Management Trial

Soil sampling



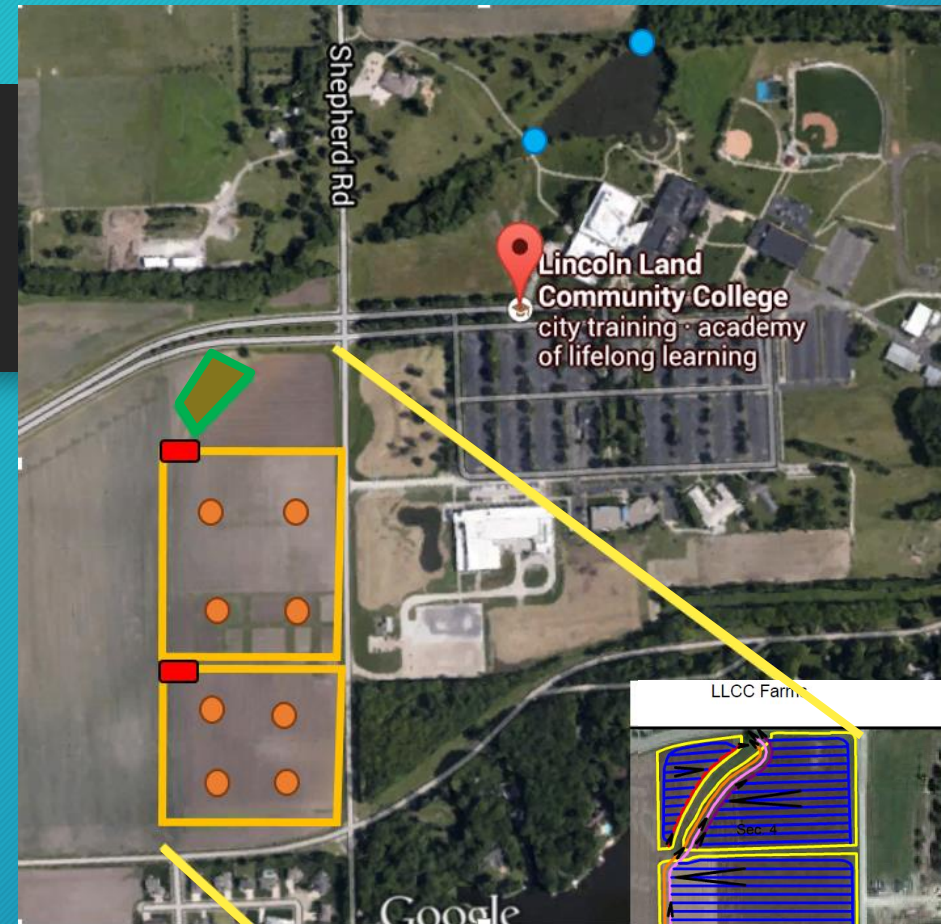
Plant tissue sampling



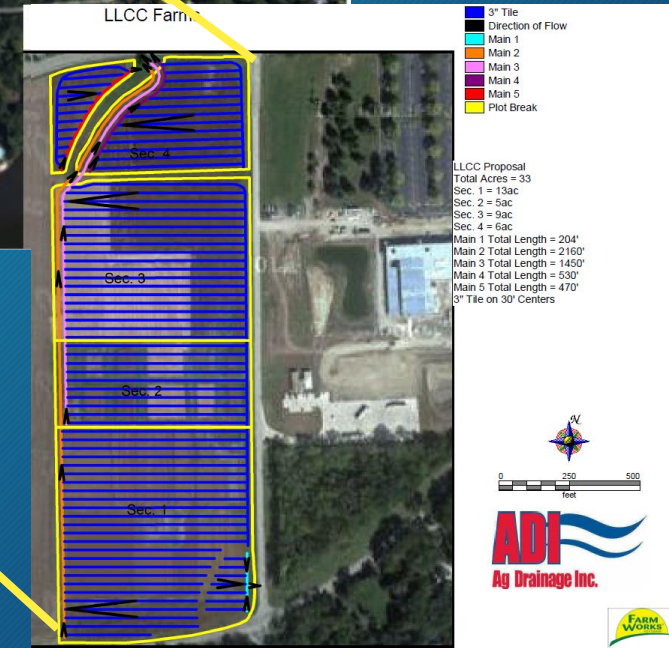
Demonstration Farms

Lincoln Land Community College

- CBMP's Cover Crop Training Grant
- SWCD's 319 Grant -bioreactor
- Opportunity to be used for new Dept of Labor program training in Agricultural Watershed Management



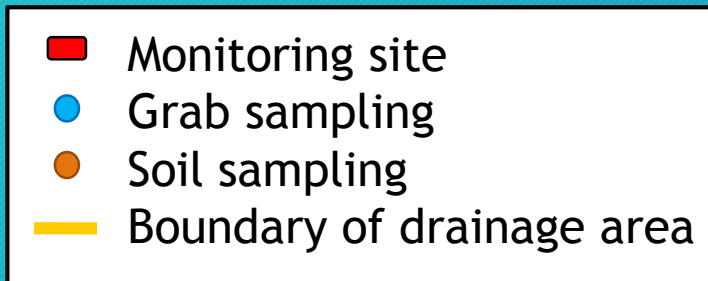
- Monitoring site
- Grab sampling
- Soil sampling
- Boundary of drainage area
- Boundary of bioreactor



Demonstration Farms

Illinois Central College

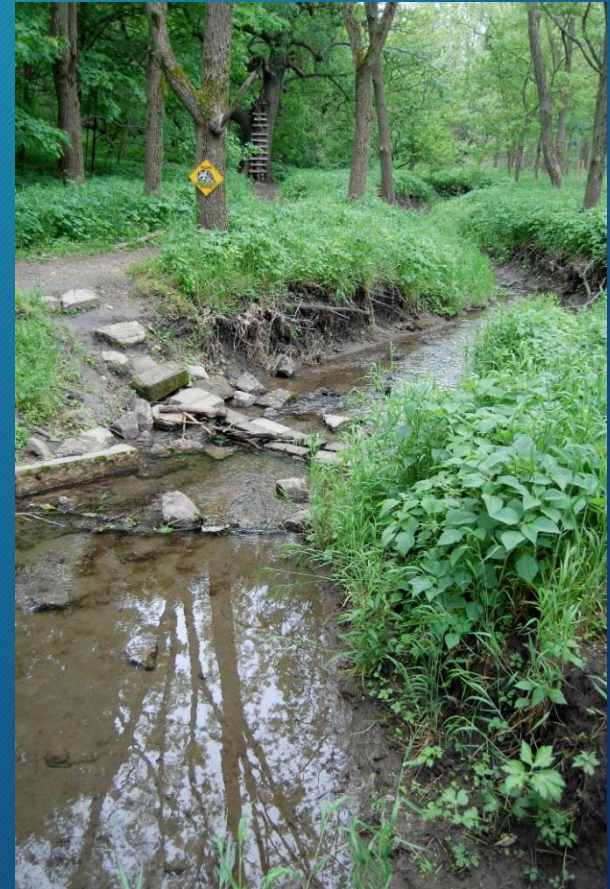
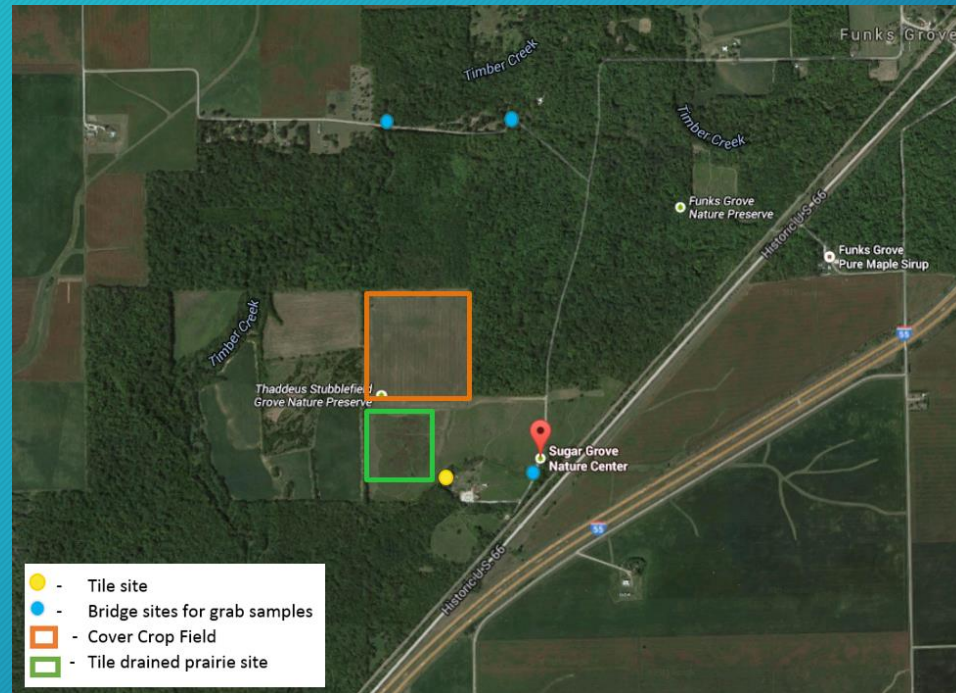
- Cover Crop Training Grant
- Cover Crop Herbicide Trials



Demonstration Farms Partnership

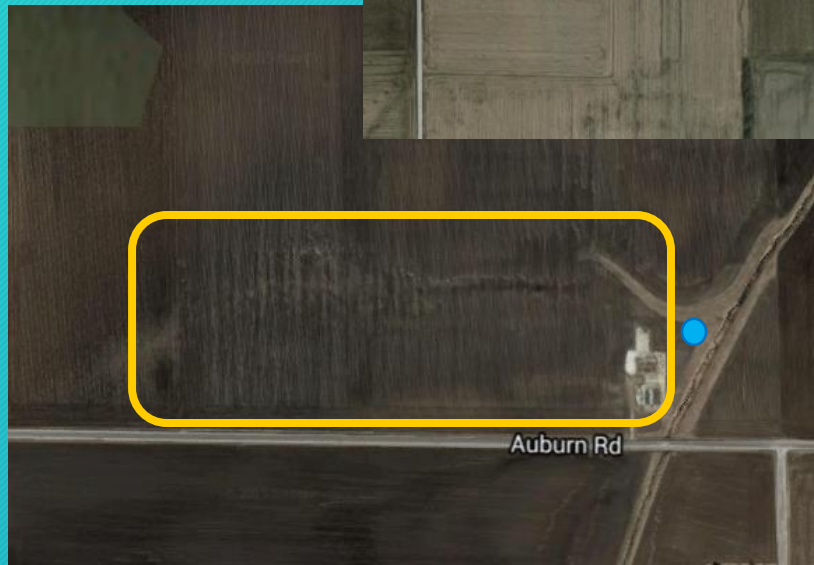
Sugar Grove Nature Center

- Zea Mays Foundation and CBMP's Cover Crop Training Grant
- Opportunity to reach out to a more public, non-farmer audience



Demonstration Farms

Flow and grab
sample sites
near Auburn



- Monitoring site
- Grab sampling
- Soil sampling
- Boundary of drainage area
- Boundary of saturated buffer



Potential Saturated Buffer
site near Auburn

Demonstration Farms Partnership

Equipment will be purchased and loaned out to local SWCDs to host weekly **Water Testing Open House** events for farmers to bring in water

Local Community College faculty will have access for using with ag classes



Measures ambient concentration of Nitrate and Ammonium